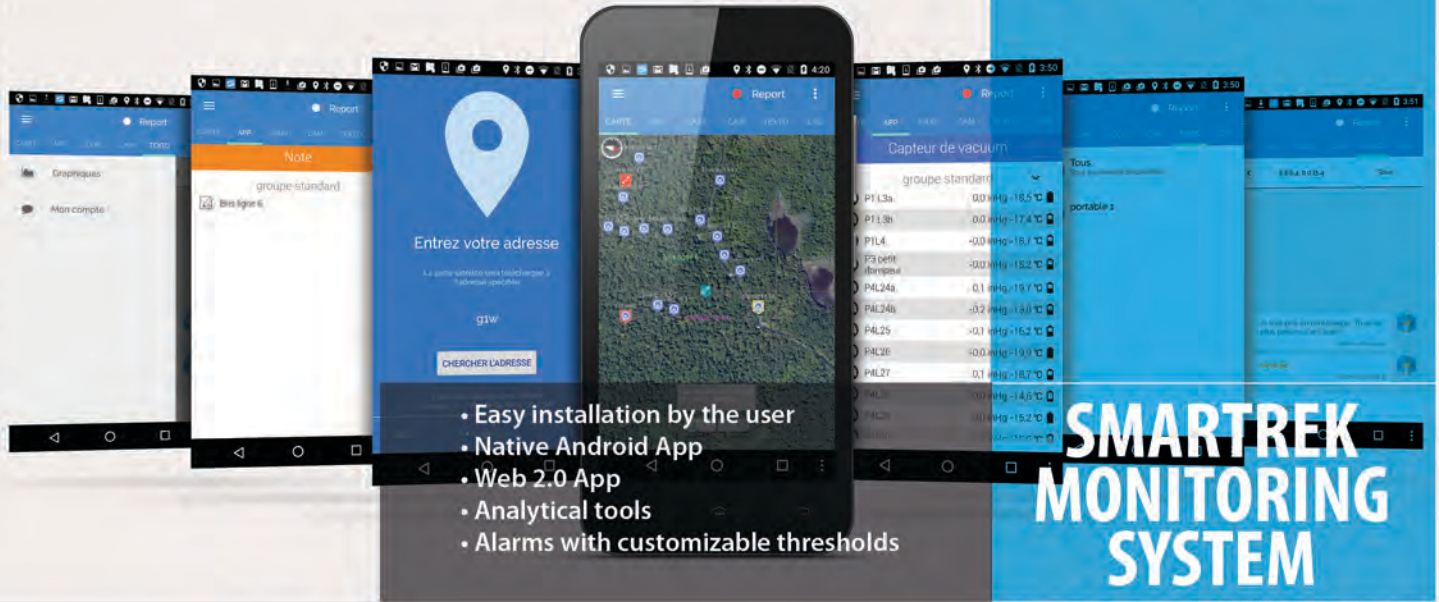


# CREATING A **SMARTER** CONNECTED WORLD





- Easy installation by the user
- Native Android App
- Web 2.0 App
- Analytical tools
- Alarms with customizable thresholds

## Features

- Native Android App/Web 2.0 App
- Analytical tools such as charts/history viewing
- Real-time readings and data logging
- Sound/speech/e-mail/SMS alarms with customizable thresholds
- Intranetnetwork messaging
- Equipment control
- Customizable automation using in-app block programming tool / javascript

The **SMARTREK MONITORING** is tailored for deployment of WSN from basic to the most challenging locations, and is designed with smooth end-user experience in mind. The system has been tested and tried out since 2013 within the maple syrup industry, and more recently in wireless monitoring tailored for groundwater management.

Multiple sensors are connected to the system via a one-step installation procedure. Data can then be accessed using the provided Android App, or remotely from the Web2.0 App if the system is configured to send information to the Cloud.

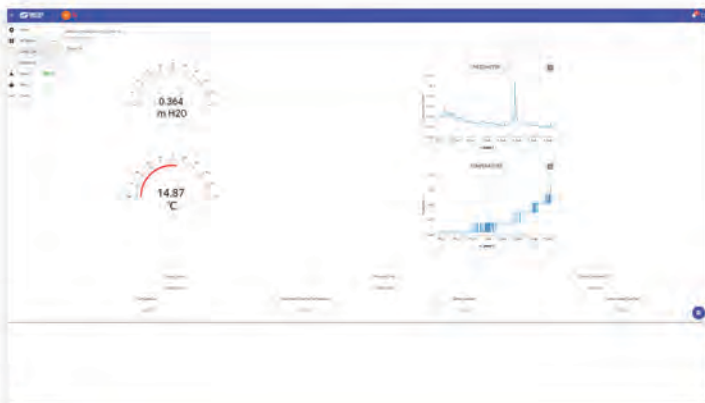
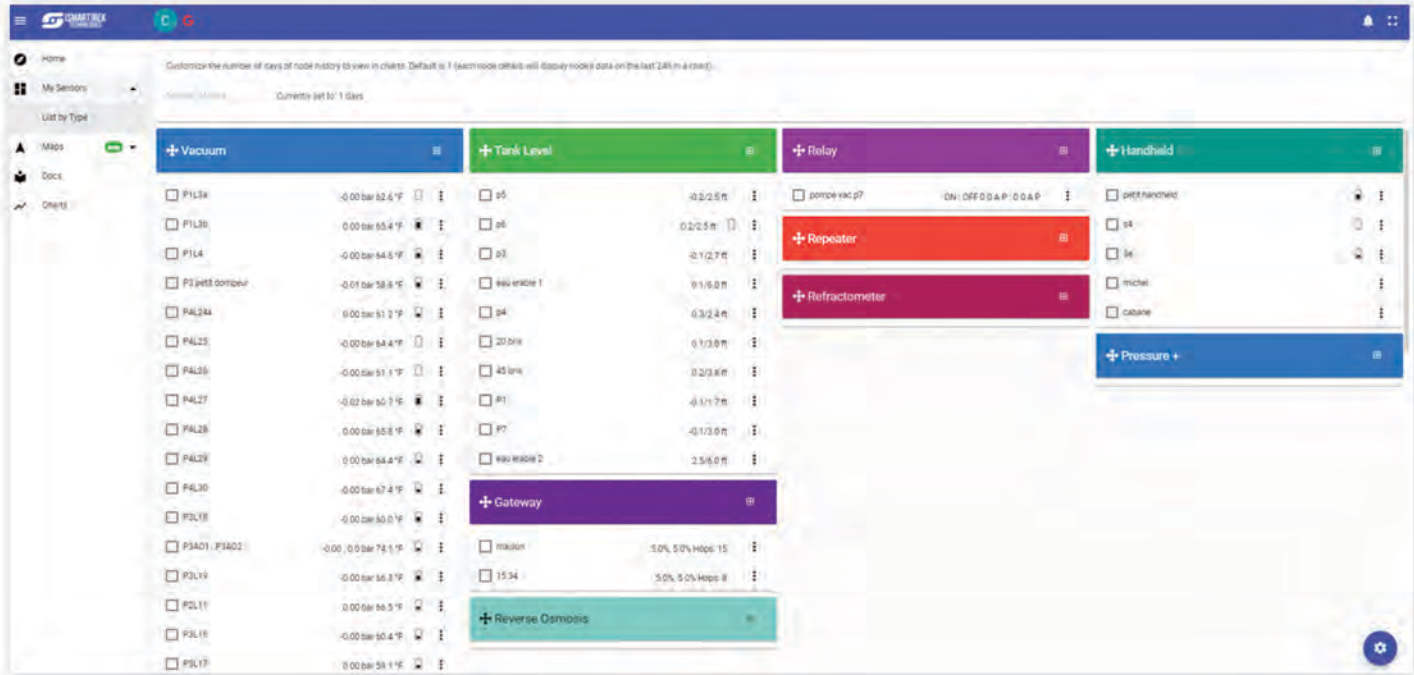
The SMARTREK MONITORING system is built on Smartrek's proprietary cooperative wireless mesh technology. As a result, the system is fully scalable and can accommodate 200+ sensors. Due to contention mitigation strategies in force, most of these sensors operate on primary batteries that can last for up to 7 years without needing backup power sources and/or energy harvesting.

## Specifications

Wireless technology	Spidermesh
Data-logging	Yes, in-app stored on local disk, exportable to .csv files
Analytical tools	Charts, tripping statistics, history
Alarms	Customizable. Sound/speech/e-mail/SMS
Control/automation	Yes, with customizable block programming automation / javascript
Intranetwork messaging	Yes
Roaming	Yes, roaming device allows interaction within the network
Subscription	No. Internet/cellular not required. Standalone
Cloud	Yes. Storage on free Cloud services (Google Drive, Dropbox)

# SMARTREK WEB 2.0 APP

A user-friendly user interface is provided with every Smartrek monitoring system. Both the Android App and the Web 2.0 App (and their updates) are provided as freeware. The Web App features a browser based dashboard.



## Web App Features

- Detailed sensor page with data log viewing
- Multiple datasets charting
- Alarms with sound/speech integration
- Export datasets to .csv Excel compatible files
- Differential analysis from reference values
- Live modifications to the physical system (control/configuration/thresholds)

**NO SOLAR PANELS**  
**+ TYPICAL 5 YEARS AUTONOMY**  
**+ BEST IN CLASS MESH TECHNOLOGY**

---

**LOW MAINTENANCE**

**SYSTEM ENCRYPTION**  
**+ SECURE CLOUD SERVERS**

---

**SECURED/PRIVATE**

**EASY QR-CODE NODE INSTALLATION**  
**+ INSTALLATION WIZARD**  
**+ USER-FRIENDLY INTERFACE**

---

**MINIMAL LEARNING CURVE**

**STANDALONE**  
**+ OPTIONAL CLOUD SERVICE**  
**+ FREE STORAGE (GOOGLE DRIVE/DROPBOX)**

---

**NO SUBSCRIPTION**